



Installation & Configuration

**signoImager2 &
signoIntegrator2, RSA Manager**

This product and its documentation are manufactured by ©signotec GmbH
and distributed by ©Evolis

Contents

1. Installation.....	4
1.1 Setup language.....	4
1.2 Requirements.....	4
1.3 Licence agreement	5
1.4 Destination folder	5
1.5 Setup type.....	6
1.6 Custom setup.....	6
1.7 Operation mode	7
1.8 Installation	7
1.9 Installation completed	8
2. signImager2	9
2.1 User interface.....	9
2.2 Settings	10
2.2.1 Signature-Pad.....	10
2.2.2 Program.....	10
2.2.3 Language	12
2.2.4 Design	12
2.2.5 Signature.....	16
2.2.6 Calling the signImager with parameters	21
3. signIntegrator2	22
3.1 User interface.....	22
3.2 Settings	22
3.2.1 Signature-Pad.....	22
3.2.2 Signature.....	23
3.2.3 Display	27
3.2.4 Shortcut for signature capture.....	30
3.2.5 Language	31
4. RSA Manager	32
4.1 User interface.....	32
4.2 Menu bar	33
4.3 Settings	35
4.3.1 Encryption	35
4.3.2 Signing.....	37
5. signoReset.....	47
5.1 User interface.....	47

Models Matching Table

Evolis Model Name	Signotec Model Name
Evolis Sig100 Lite	Sigma Lite
Evolis Sig100	Sigma
Evolis Sig200	Omega
Evolis SigActiv	Gamma

Document History

Evolis Document Name and Version	Signotec Document Name and Version
Installation-Guide_SIGT_20210108_ENG	signoPAD-Tools_EN-1.0.10

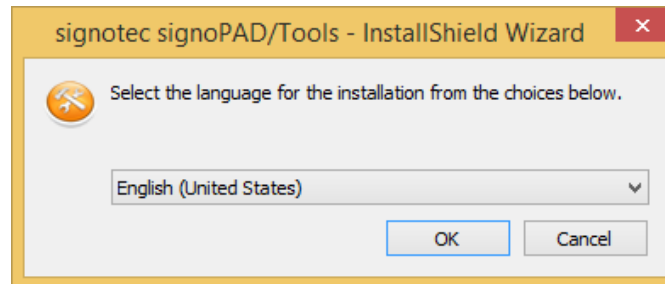
1. Installation

1.1 Setup language

In the first step, you can choose the language that will guide you through the installation. German and English are available for selection.

Once you have selected a language, click **OK**.

INFO: The selection you make here does not affect the language of the application.



1.2 Requirements

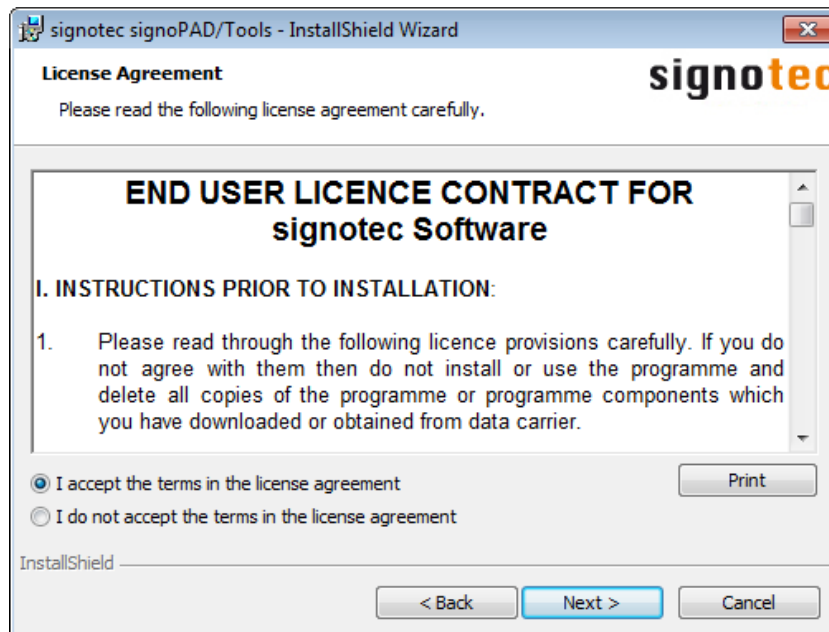
The requirements for using the individual signoPAD/Tools programs are described in the next step. Before proceeding with the installation, please ensure that you have installed the .NET Framework 2.0 or .NET Framework 4.0 Client Profile, depending on use.

If the required framework is installed on your computer, please click **Next**.



1.3 Licence agreement

To be able to use the signoPAD/Tools, you must accept the licence terms of the end user licence contract. Please read these carefully and then click **Next**.



1.4 Destination folder

In this step, you can choose a folder in which to install the signoPAD/Tools. Once you have selected the folder you require, please click **Next**.

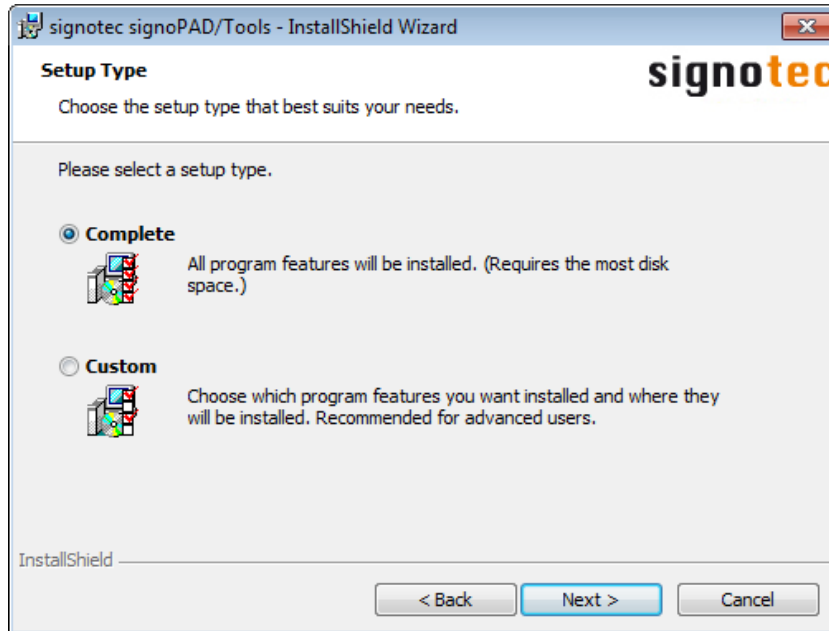


1.5 Setup type

You can either choose a complete installation or a custom installation.

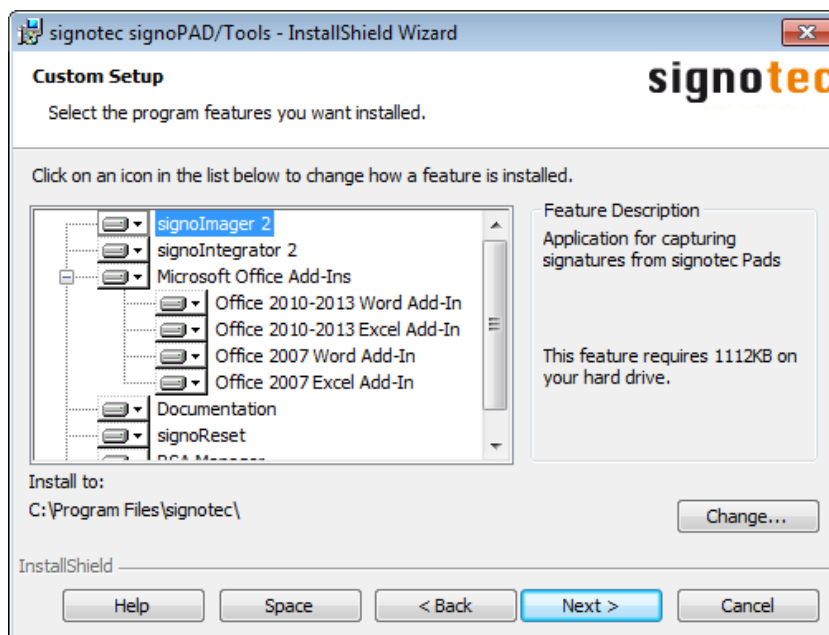
If you choose a complete installation, all program features will be installed, including signoImager2 and signoIntegrator2 as well as Office Add-Ins for 2007, 2010 and 2013.

If you opt for a custom installation, you can select which of these features you want to install.



1.6 Custom setup

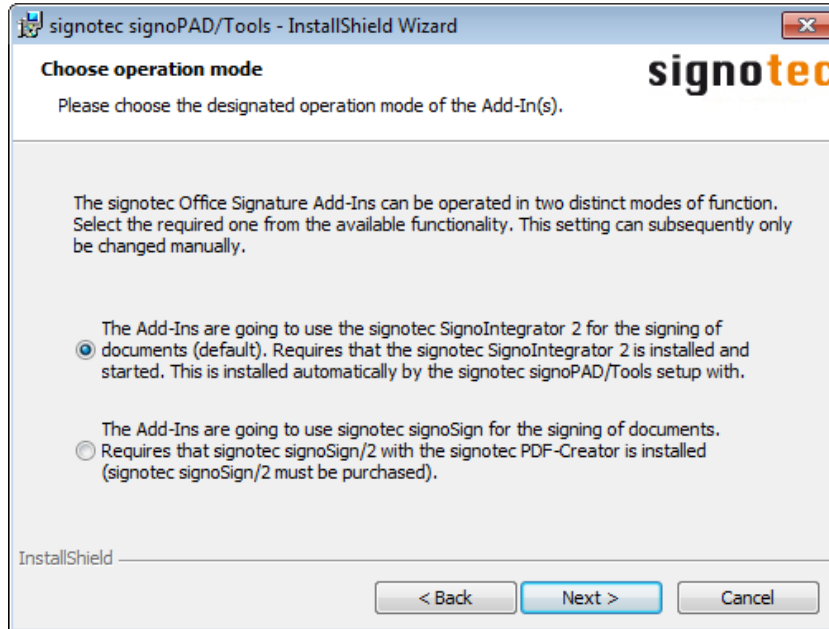
If you chose custom installation, you may deselect individual signoPAD/Tools features so that they will not be installed.



1.7 Operation mode

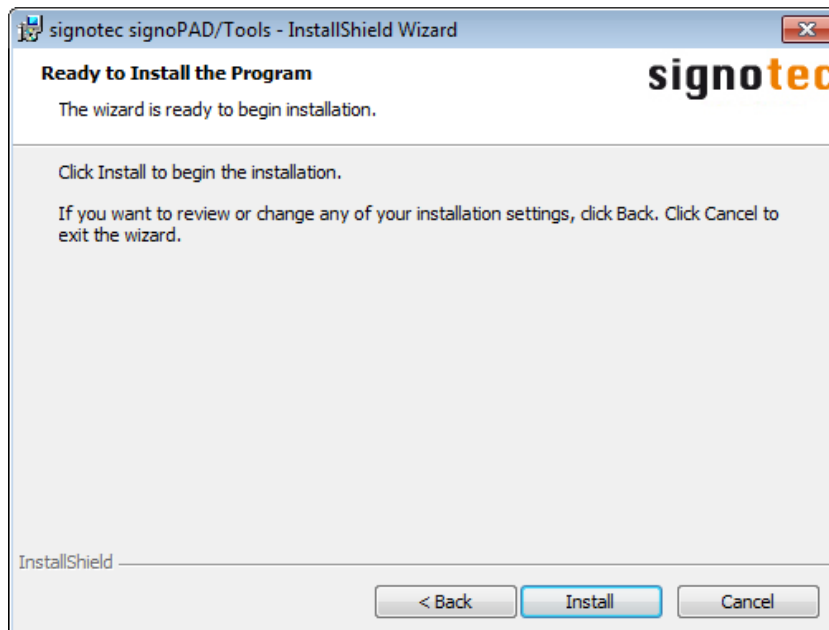
If you previously selected to install the Office Add-Ins, you can specify whether they should be used with signoIntegrator2 or signoSign/2.

INFO: signoSign/2 is not included in the signoPAD/Tools and must be purchased separately.



1.8 Installation

In the last step, click **Install** to begin the installation.



1.9 Installation completed

Once the signoPAD/Tools have been successfully installed, click **Finish** to exit the setup.



On your desktop, you will now find icons for the individual applications that you installed.



2. signomager2

signomager2 allows you to capture a signature that you can then save as a graphic. The signomager2 application is described below.

2.1 User interface

As soon as signomager2 has started, the following dialog appears.

Click **File** on the menu bar to exit the application, click **Configuration** to go to the settings or **?** to display the contact details for signotec GmbH.

A folder for storing the signature as a graphic is specified under the menu bar.

INFO: If you set the folder in the user interface, it will only apply temporarily. If you want to change the folder permanently, you have to do this in the settings.

Click **Start** to start the signature capture process.

Once a signature has been provided, you can click **Reproduce** to display it again.



2.2 Settings

2.2.1 Signature-Pad

Connection-Type

You use the Connection-Type setting to specify the type of pad you want to use for capturing the signature. You can choose between **HID**, **VCOM** and **IP**.

HID: If you select HID, all you need to do is connect the signature device to your computer.

VCOM: If you select VCOM, the FTDI driver must be installed. This is used to generate a virtual COM port for the signature device, via which the device can be activated. Now select the respective port that has been assigned to the device under **VCOM-Port**. If you do not know which port is used, click the **unknown** button.

IP: If you select IP, enter the respective IP that has been assigned to the signature device under **IP-Address** and select the **Port** via which communication takes place in the network.

2.2.2 Program

Close after signing process

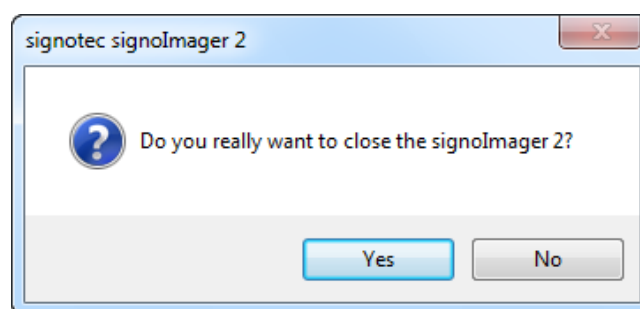
Use this setting to ensure that the signolmager2 program closes after the signature has been captured, confirmed and saved.

Close even after Cancel

This setting refers to the previous point and can be used to specify that the signolmager2 should also close after the signature capture process or Save dialog has been cancelled.

Show confirmation prompt before closing

If you have specified that signolmager2 should close after the signature has been captured, a query dialog can be displayed to ask whether you really want to close the application.



Start signing process at startup

If you have enabled this setting, the signature dialog appears directly after signImager2 is launched, provided a signature device has been connected and found via the correct connection type. This means that you do not need to click **Start** to start the process of capturing the signature.

Save signature to

This is where you specify the folder in which to store the signature. This is the setting mentioned above that applies permanently and not just temporarily. You can use the ... button to select a different folder.

When saving

You use this setting to specify which action should be carried out on saving. You can choose between **Overwrite existing file**, **Append counter to file name**, **Show save file dialog** and **Copy image only to clipboard**.

Overwrite existing file: If you select this option, the graphic will be stored at the defined storage location under the file name 'Signature'. If a file with the same name already exists, the file will be overwritten. You will not be asked whether you do really wish to overwrite the file.

Append counter to file name If you select this option, the graphic will be stored at the defined storage location under the file name 'Signature'. If a file with the same name already exists, a counter will be appended to the file name.

Show save file dialog: If you select this option, a dialog will be displayed before saving in which you can specify the storage location and file name yourself. This means that you do not need to specify the storage location in the settings.

Copy image only to clipboard: If you select this option, the signature will not be stored as a file but will be copied to the clipboard. You can then paste the graphic to another program or file using Ctrl + V.

Signature rendering

Once the signature has been provided, it can be rendered again. You can either render the signature as a complete **Image** or in **Realtime**.

Image: If you select Image, you can display the captured signature once again as a complete graphic.

Realtime: If you select Realtime, you can display the captured signature once again with the respective print speed, that is, in real time.

2.2.3 Language

Language is system language

You have the option to change the application language. The system language is used by default.

If you want to set another language that is different from the system language, you must disable this setting so that you can select one of the available languages from the selection list.

English: Displays the signImager2 program in English.

German: Displays the signImager2 program in German.

INFO: If you change the language, you must restart the application for the change to take effect.

2.2.4 Design

Mirror pad LCD

You can use this setting to specify whether the signature capture dialog should also be displayed on your computer, and if so, whether only the signature should be displayed or the entire pad display as shown on the signature device. You can choose between **Off**, **Signature only** and **Complete Content (not with Alpha)**.

Off: If you select Off, the signature capture dialog will only be displayed on the signature device.

Signature only: If you set Signature only, only the signature will be displayed in the signature capture dialog on your computer.



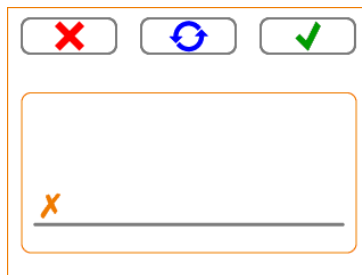
Entire content: If you set Entire content, the entire pad display will be shown as it appears on the signature device.



Design

You can use this setting to modify the appearance of the buttons on the signature device. If you previously enabled the display of the entire pad content, you can also modify the appearance of the buttons for the dialog on your computer. You can choose between three different designs: **Classic**, **Modern** and **Round**.

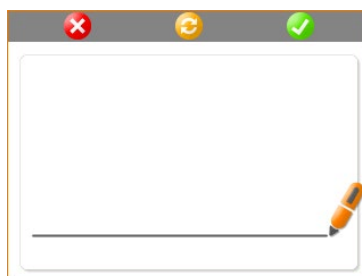
Classic: If you select Classic, the buttons will be displayed as follows:



Modern: If you select Modern, the buttons will be displayed as follows:



Round: If you select Round, the buttons will be displayed as follows:



Pad buttons

You use this option to specify whether each button (**Cancel**, **Retry** and **OK**) should be displayed on the signature device.

All buttons:



Cancel:



Cancel and retry:



Cancel and OK:



Retry:



Retry and OK:



OK:



No buttons:

INFO: If you disable all the buttons on the signature device, you will only be able to cancel, repeat or confirm the signature using the dialog on your computer.

Pen width

You can use the Pen width setting to control how wide you want the signature to be displayed in the signature capture dialog on your computer. This setting does not affect how the signature is displayed on the signature device. You can select a pen width between **0** (Use pressure) and **10** (Very thick width).

0 (Use pressure):



10 (Very thick width):



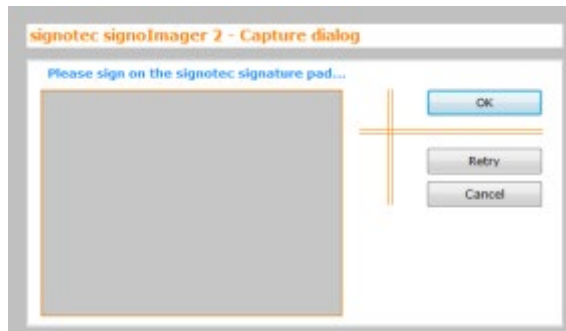
Pen colour

You can use this option to set the pen colour. The pen colour relates only to how the signature is displayed on the signature device and in the signature dialog. The colour of the signature itself is controlled using the line colour. This point will be explained later on.



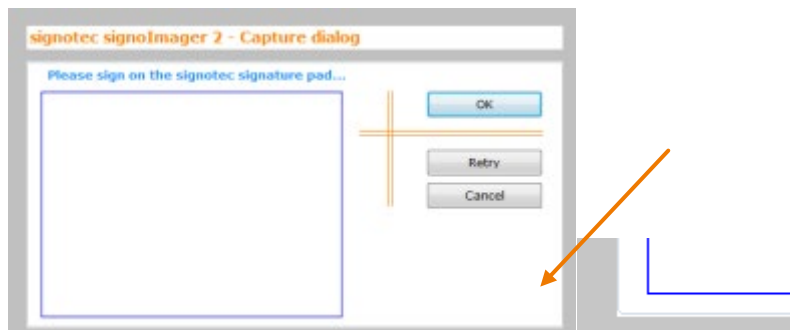
Control colour

You use this setting to specify the background colour of the signature capture dialog on your computer. This setting does not affect the display on the signature device and only applies if the mirroring is set to **Signature only**.



Controlborder colour

You can use this setting to specify the colour of the signature capture dialog border. This setting does also not affect the display on the signature device.

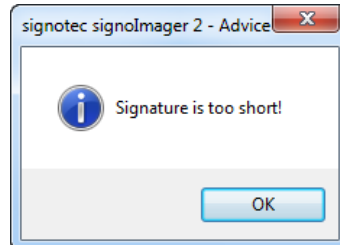


2.2.5 Signature

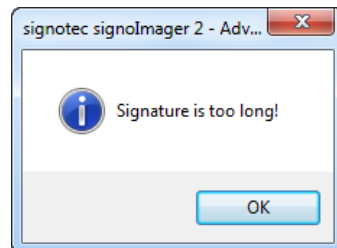
Check for

You can use this function to specify whether the validity (**Minimum length** and/or **Maximum length**) of the captured signature should be checked.

Minimum length: If you have selected this option and the captured signature is too short and therefore probably invalid, the following message appears:



Maximum length: If you have selected this option and the captured signature is too long and therefore probably invalid, the following message appears:



File format

You can save the signature in various file formats. You can choose between **TIFF**, **PNG**, **BMP**, **JPEG** and **GIF**.

Resolution

You can specify the resolution of the signature graphic in DPI. You can select a value between 75 DPI (low resolution, poor quality) and 600 DPI (high resolution, good quality).

Add timestamp

You can also add a timestamp to the graphic for the signature. This timestamp indicates the time at which the signature was captured.

Add timestamp disabled:



Add timestamp enabled:



11:32:47 - 23.05.2013

Image size

The image size allows you to specify the size of the graphic (in pixels). You can either select **Original (as on Pad)** to align the size to the DPI that has been set or **Scaled to** to specify a fixed size in pixels.

Line width

You can use the line width to set the width of the signature in the graphic. This setting does not affect how the signature is displayed on the signature device or in the signature capture dialog on your computer. You can select a line width between **0** (Use pressure) and **10** (Very thick width).

0 (Use pressure):



12:07:20 - 23.05.2013

10 (Very thick width):



12:07:20 - 23.05.2013

Line colour

You can use this option to set the pen colour. The pen colour relates to the colour of the signature in the graphic. This setting does not affect how the signature is displayed on the signature device or in the signature capture dialog on your computer.



12:07:20 - 23.05.2013

Smooth (larger file size)

To achieve a better-quality signature, you can smooth its edges with antialiasing. However, this optimisation will increase the size of your file. The following excerpt clearly illustrates this.

Smooth disabled:

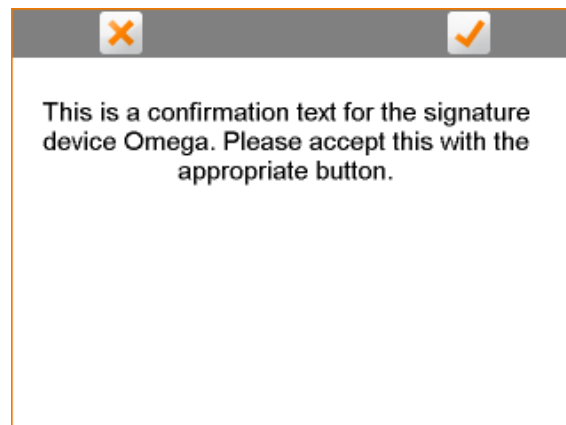


Smooth enabled:



File path for the displaytext (ignored if using Sigma model)

Confirmation text can be shown on the signature device's display before or while the signature capture dialog is open. You can incorporate this confirmation text via a text file. The text that is contained in this file is displayed on the pad accordingly.



INFO: You can only use text files in the .txt file format and this is only compatible with Omega, Alpha, Gamma, Zeta or Delta signature devices.

Confirm display text before signing

If you select this option, the confirmation text will be queried before the signature. This means that the text shown on the pad must be confirmed before the signature can be captured. If the confirmation text is cancelled, the dialog will close and no signature will subsequently be requested.

If you disable this option, the confirmation text will appear as a background image in the signature capture dialog.

Click **Save settings** to save all the settings that you have specified. To discard all the changes that you have made, click **Cancel**.

signotec signoImager 2 - Settings

Signature Pad

Connection-Type:

VCOM-Port: Port: unknown

IP Address: . . . Port:

Program

Close after signing process

Close even after Cancel

Show confirmation prompt before closing

Start signing process at startup

Save signature to:

C:\Users\Ferenc Hilker

When saving:

Rendering:

Language

Changes to the language are only effective after a restart of the application!

Language is system language

Design

Mirror Pad LCD:

Design:

Pad buttons: Cancel Retry OK

Pen width: (0 = Use Pressure) Pen color:

Control color: Controlborder color:

Signature

Check for: Minimum length Maximum length

File format:

Resolution: DPI Add timestamp

Image size: Original (as on Pad)

Scaled to X Pixels

Line width: (0 = Use Pressure)

Line color: Smooth (larger file size)

File path for the display text (ignored if using Sigma model)

C:\Users\Ferenc Hilker\Desktop\confirmationtext.txt

Confirm display text before signing

2.2.6 Calling the signolmager with parameters

You have the option of calling the signolmager with command line arguments that override the general program settings.

The signolmager can be called with the following parameters. Using multiple parameters is possible and requires a blank as a separator.

Parameter	Description
-i	Allows a multiple instantiation of the signolmager.
-pr <i>x</i>	Allows setting a defined image resolution. <i>X</i> stands for the desired DPI value. Example: "-pr100" for a resolution of 100dpi
-pf <i>x</i>	Allows the setting of a defined image format. The <i>X</i> stands for the different image formats. Available formats are: T Tiff P PNG PT PNG with transparency B BMP J JPEG G GIF Example: „-pfpt“ for a PNG picture with transparency
-dc <i>x</i>	Allows to choose the connection type of the signature pad to be used. The <i>X</i> stands for the different connection types. Be available: H HID / WinUSB S Serial / FTDI (unknown port) S <i>x</i> Serial / FTDI (x serves as a placeholder for a COM Port) l <i>x</i> IP / Ethernet (x serves as a placeholder for a IP-Address) Example: „-dci192.168.100.100:1002“ for using a IP-Ethernet pad at IP address 192.168.100.100. The specification of the port (:1002) ist optional.
-m	Allows creating a metadata file, which is saved in the configured directory next to the image file. The file with file extension *.log is saved when exiting the application and holds information about the status OK, CANCEL or ERROR (with error text) in UTF-8 format. MessageBoxes are not displayed when using the metadata file and the application automatically terminates in case of an error. Existing metadata files are overwritten.
-f " <i>x</i> "	Allows setting a filename for the image and metadata file. The „ <i>x</i> “ stands for the file name. Quotation marks are necessary for file names with spaces only. Invalid special characters are replaced automatically with an underscore. For example: -f "Operation 4711" creates an image file and metadata file named "Operation 4711 (.png / .log)"

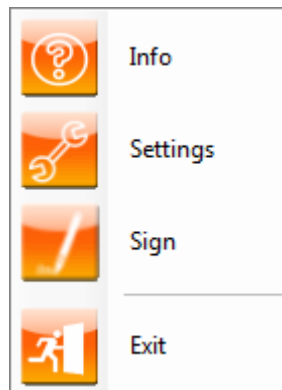
3. signoIntegrator2

signoIntegrator2 allows you to capture a signature that you can then copy to the clipboard. You can then integrate the graphic into any program or any file. The signoIntegrator2 application is described below.

3.1 User interface

As soon as signoIntegrator2 has started, the application runs in the background and you can only access the user interface by clicking the icon in the toolbar.

Click **Exit** to exit the application, click **Settings** to go to the configuration or **Info** to display the contact details for signotec GmbH. Click **Sign** to start the signature capture process.



3.2 Settings

3.2.1 Signature-Pad

Connection-Type

You use the Connection-Type setting to specify the type of pad you want to use for capturing the signature. You can choose between **HID**, **VCOM** and **IP**.

HID: If you select HID, all you need to do is connect the signature device to your computer.

VCOM: If you select VCOM, the FTDI driver must be installed. This is used to generate a virtual COM port for the signature device, via which the device can be activated. Now select the respective port that has been assigned to the device under **VCOM-Port**. If you do not know which port is used, click the **unknown** button.

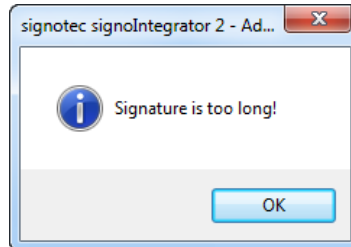
IP: If you select IP, enter the respective IP that has been assigned to the signature device under **IP-Address** and select the **Port** via which communication takes place in the network.

3.2.2 Signature

Check for

You can use this function to specify whether the validity (**Minimum length** and/or **Maximum length**) of the captured signature should be checked.

Minimum length: If you have selected this option and the captured signature is too short and therefore probably invalid, the following message appears:



Maximum length: If you have selected this option and the captured signature is too long and therefore probably invalid, the following message appears:



Resolution

You can specify the resolution of the signature graphic in DPI. You can select a value between 75 DPI (low resolution, poor quality) and 600 DPI (high resolution, good quality).

Add timestamp

You can also add a timestamp to the graphic for the signature. This timestamp indicates the time at which the signature was captured.

Add timestamp disabled:

Add timestamp enabled:

11:32:47 - 23.05.2013

Image size

The image size allows you to specify the size of the graphic (in pixels). You can either select **Original (as on Pad)** to align the size to the DPI that has been set or **Scaled to** to specify a fixed size in pixels.

Line width

You can use the line width to set the width of the signature in the graphic. This setting does not affect how the signature is displayed on the signature device or in the signature capture dialog on your computer. You can select a line width between **0** (Use pressure) and **10** (Very thick width).

0 (Use pressure):

12:07:20 - 23.05.2013

10 (Very thick width):

12:07:20 - 23.05.2013

Line colour

You can use this option to set the pen colour. The pen colour relates to the colour of the signature in the graphic. This setting does not affect how the signature is displayed on the signature device or in the signature capture dialog on your computer.



12:07:20 - 23.05.2013

Smooth (larger file size)

To achieve a better-quality signature, you can smooth its edges with antialiasing. However, this optimisation will increase the size of your file. The following excerpt clearly illustrates this.

Smooth disabled:

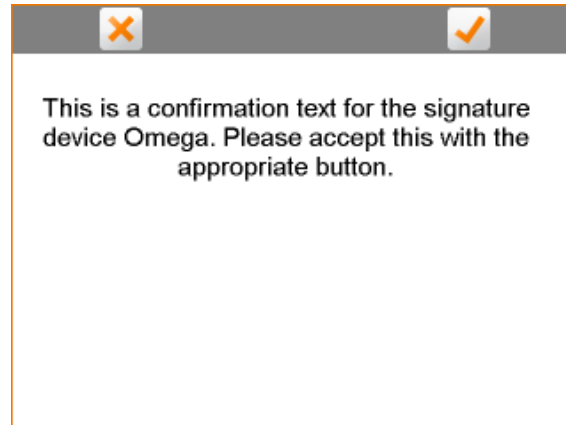


Smooth enabled:



File path for the displaytext (ignored if using Sigma model)

Confirmation text can be shown on the signature device's display before or while the signature capture dialog is open. You can incorporate this confirmation text via a text file. The text that is contained in this file is displayed on the pad accordingly.



INFO: You can only use text files in the .txt file format and this is only compatible with Omega, Alpha, Gamma, Zeta or Delta signature devices.

Confirm display text before signing

If you select this option, the confirmation text will be queried before the signature. This means that the text shown on the pad must be confirmed before the signature can be captured. If the confirmation text is cancelled, the dialog will close and no signature will subsequently be requested.

If you disable this option, the confirmation text will appear as a background image in the signature capture dialog.

3.2.3 Display

Mirror pad LCD

You can use this setting to specify whether the signature capture dialog should also be displayed on your computer, and if so, whether only the signature should be displayed or the entire pad display as shown on the signature device. You can choose between **Off**, **Signature only** and **Complete Content (not with Alpha)**.

Off: If you select Off, the signature capture dialog will only be displayed on the signature device.

Signature only: If you set Signature only, only the signature will be displayed in the signature capture dialog on your computer.



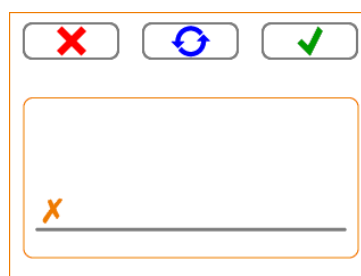
Entire content: If you set Entire content, the entire pad display will be shown as it appears on the signature device.



Design

You can use this setting to modify the appearance of the buttons on the signature device. If you previously enabled the display of the entire pad content, you can also modify the appearance of the buttons for the dialog on your computer. You can choose between three different designs: **Classic**, **Modern** and **Round**.

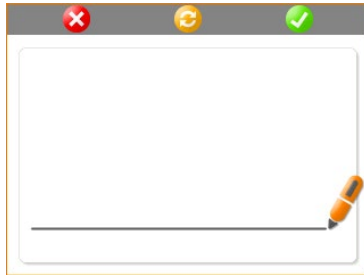
Classic: If you select Classic, the buttons will be displayed as follows:



Modern: If you select Modern, the buttons will be displayed as follows:



Round: If you select Round, the buttons will be displayed as follows:



Pad buttons

You use this option to specify whether each button (**Cancel**, **Retry** and **OK**) should be displayed on the signature device.

All buttons:



Cancel:



Cancel and retry:



Cancel and OK:



Retry:



Retry and OK:



OK:



No buttons:

INFO: If you disable all the buttons on the signature device, you will only be able to cancel, repeat or confirm the signature using the dialog on your computer.

Pen width

You can use the Pen width setting to control how wide you want the signature to be displayed in the signature capture dialog on your computer. This setting does not affect the display on the signature device. You can select a pen width between **0** (Use pressure) and **10** (Very thick width).

0 (Use pressure):



10 (Very thick width):



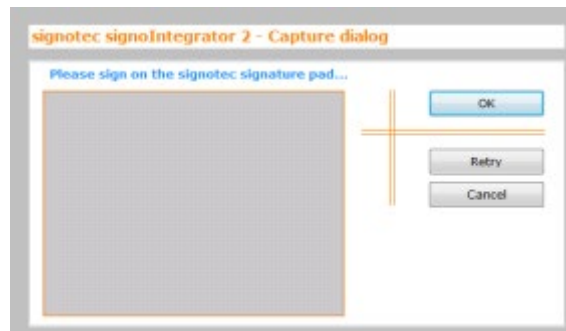
Pen colour

You can use this option to set the pen colour. The pen colour relates only to how the signature is displayed on the signature device and in the signature dialog. The colour of the signature itself is controlled using the line colour. This point will be explained later on.



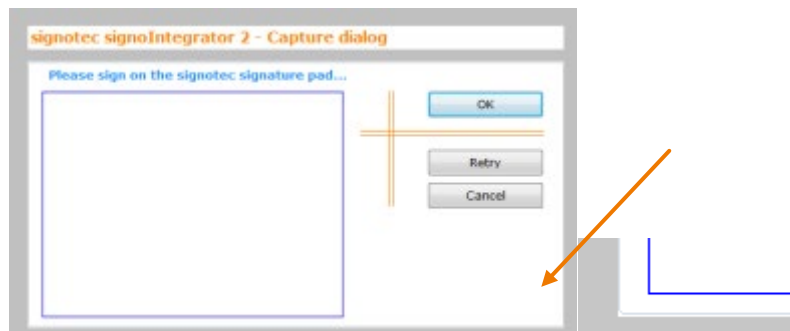
Control colour

You use this setting to specify the background colour of the signature capture dialog on your computer. This setting does not affect the display on the signature device.



Controlborder colour

You can use this setting to specify the colour of the signature capture dialog border. This setting does also not affect the display on the signature device.



3.2.4 Shortcut for signature capture

Shortcut

This setting allows you to specify a shortcut that can be used to start the signature capture process, provided that signoIntegrator2 is running. You can select a function key between F1 and F12 along with one or several other keys (Shift, CTRL and ALT) as your shortcut. For example, if you have selected the F8 function key and Shift as your shortcut, you must press both keys simultaneously to start the signature capture process.

3.2.5 Language

Language is system language

You have the option to change the application language. The system language is used by default.

If you want to set another language that is different from the system language, you must disable this setting so that you can select one of the available languages from the selection list.

English: Displays the signoIntegrator2 program in English.

German: Displays the signoIntegrator2 program in German.

INFO: If you change the language, you must restart the application for the change to take effect.

Click **OK** to save all the settings that you have specified. To discard all the changes that you have made, click **Cancel**.

4. RSA Manager

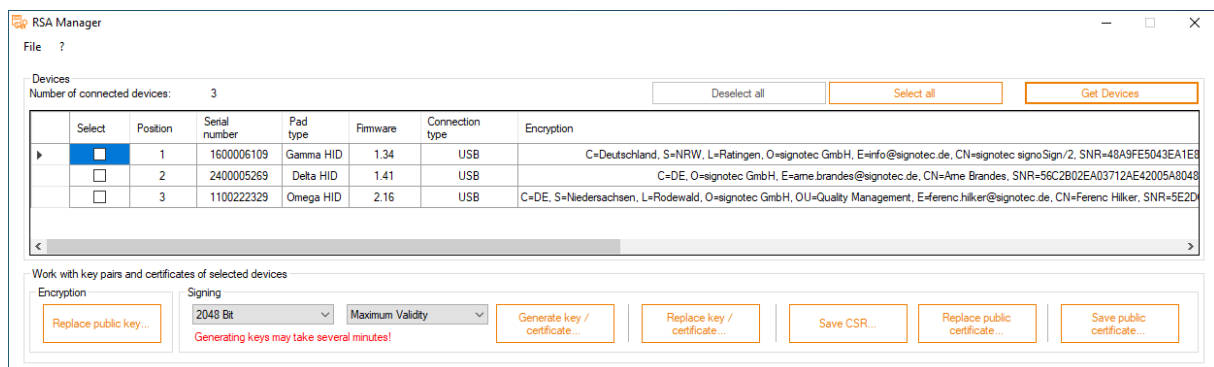
The RSA Manager is a certificate management program for signature devices. The application allows you to replace the certificates for signing a document or for encrypting biometric data. The RSA Manager application is described below.

4.1 User interface

As soon as the RSA Manager has started, a table appears showing all the available signature devices. This may take a moment as a search is carried out for all Sigma, Omega, Alpha, Gamma, Zeta and Delta devices in FTDI or HID mode as well as for the Alpha, Gamma, Zeta and Delta device in WinUSB mode. All information is listed afterwards. Devices that are operated via a USB Ethernet Adapter or that are in IP mode are not listed.

After the search, the table provides information on the serial number, pad type, firmware and connection type as well as the certificates (if available) for signing and encryption for the respective devices.

Various buttons are available for managing the certificates on the devices. These buttons and their functions will be explained in more detail in the following sections.



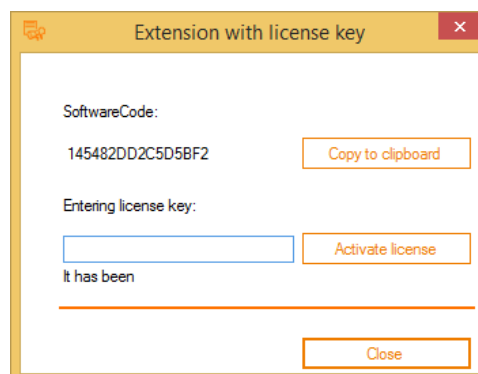
4.2 Menu bar

Click **File** on the menu bar to exit the application or click **?** to obtain information about the respective version.

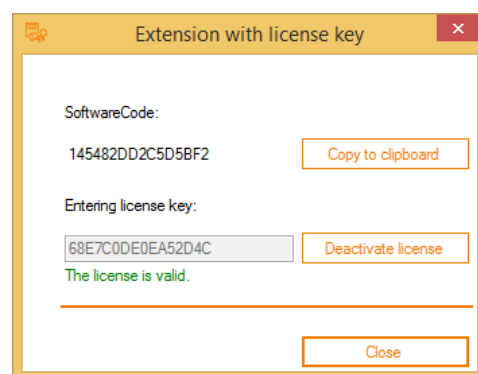
In addition to the version number and signotec GmbH contact details, you will also find an **Extension with license key** button in the RSA Manager information.



By acquiring a licence, you can activate additional functions for the RSA Manager. To be able to create a licence for you, we require the **SoftwareCode** that is displayed. Enter this licence key in the field provided and select **Activate license**.



If the licence key is valid, it will be entered into the key.txt file and stored in the %PROGRAMDATA%\signotec\RSAManager folder. You will receive a message stating that the licensing process has been successful. If you want to deactivate the licence again and disable the advanced functions, click **Deactivate license**.



You will see that the appearance of the user interface has changed to display all the newly added settings under **Options enabled by license**.

RSA Manager

File ?

Devices
Number of connected devices: 3 Deselect all Select all Get Devices

Select	Position	Serial number	Pad type	Firmware	Connection type	Encryption
<input checked="" type="checkbox"/>	1	1600006109	Gamma HID	1.34	USB	C=Deutschland, S=NRW, L=Ratingen, O=signotec GmbH, E=info@signotec.de, CN=signotec signoSign/2, SNR=48A9FE5043EA1E8
<input type="checkbox"/>	2	2400005269	Delta HID	1.41	USB	C=DE, O=signotec GmbH, E=ame.brandes@signotec.de, CN=Ame Brandes, SNR=56C2B02EA03712AE42005A8048
<input type="checkbox"/>	3	1100222329	Omega HID	2.16	USB	C=DE, S=Niedersachsen, L=Rodewald, O=signotec GmbH, OU=Quality Management, E=ferenc.hilker@signotec.de, CN=Ferenc Hilker, SNR=5E2D

Work with key pairs and certificates of selected devices

Encryption

Replace public key... Signing: 2048 Bit Maximum Validity Generate key / certificate... Replace key / certificate... Save CSR... Replace public certificate... Save public certificate...

Generating keys may take several minutes!

Options enabled by license

Serial number	Pad type	Firmware	Connection type	Device can create a RSA key pair that is used for signing	Device can save a RSA key pair that is used for signing	Device can save public RSA key used to encrypt	Device can sign external created data	Device can encrypt external created data	Se	Mc

Change password RSA Delete password RSA... Enable / Change password / Disable Secure Mode Disable features

Change password RSA... Delete password RSA... Enable Secure Mode / Change password... Disable Secure Mode... With this button, various functionalities of the signature device can be switched off permanently. An enable is possible only by paid resetting of the firmware to the factory State. Disable features...

4.3 Settings

4.3.1 Encryption

Replace public key...

You can use this button to replace the public key for encrypting biometric data on the pad or add one, if no certificate is present.

First select the checkboxes of the devices whose encryption public key you would like to change.

Select	Position	Serial number	Pad type	Firmware	Connection type	Encryption	Signing
<input checked="" type="checkbox"/>	1	1200010385	Omega Serial	1.26	Serial		Issued For: signotec Omega Device ID:1200010385 Issued By: signotec Omega Device ID:1200010385 Valid From: 12/30/2
<input checked="" type="checkbox"/>	2	2000007442	Sigma Serial	1.16	Serial		Issued For: signotec Sigma Device ID:2000007442 Issued By: signotec Sigma Device ID:2000007442 Valid From: 12/30/2
<input type="checkbox"/>	3	1100021439	Omega HID	1.31	HID		Issued For: signotec Omega Device ID:1100021439 Issued By: signotec Omega Device ID:1100021439 Valid From: 12/30/2
<input type="checkbox"/>	4	1000055571	Sigma HID	1.16	HID		Issued For: signotec Sigma Device ID:1000055571 Issued By: signotec Sigma Device ID:1000055571 Valid From: 12/30/2
<input type="checkbox"/>	5	1000001451	Sigma HID	1.16	HID		Issued For: signotec Sigma Device ID:1000001451 Issued By: signotec Sigma Device ID:1000001451 Valid From: 12/30/2

Now click **Replace public key...** and then click **Continue** to go to the next step. By default, no RSA password is set for the device which means that you can leave this input field empty. If, however, you have set a password using one of the advanced functions, please enter it here.

Replace public key?

Device Password

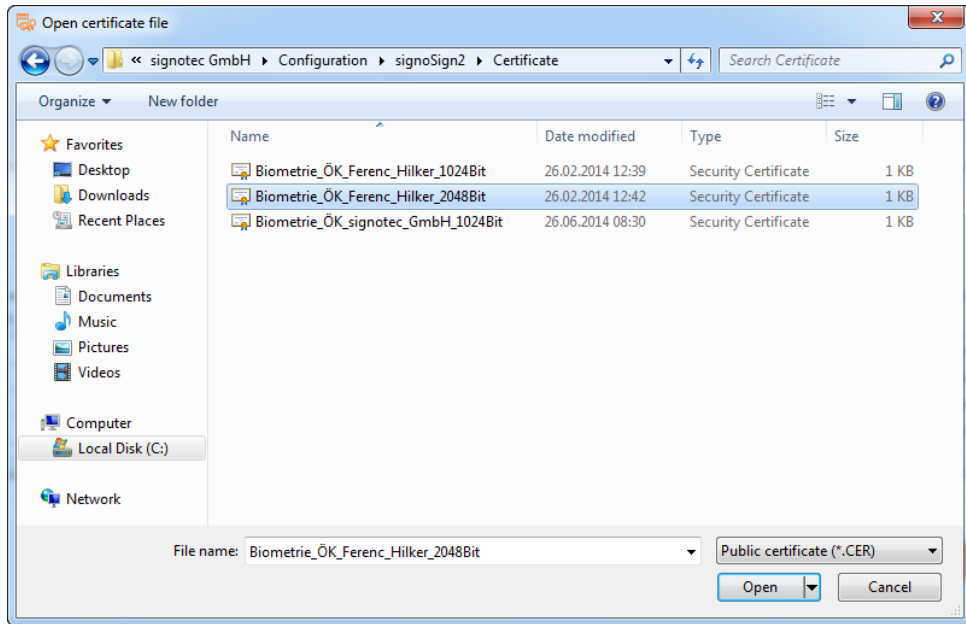
Enter the device password, if it is set:

Do you want to replace the public key in the following devices?

Device 1 with the serial number 1200010385
Device 2 with the serial number 2000007442

If so, please select the new certificate file in the next step.

In the following Open certificate file dialog, please select the required certificate file (*.CER). This file only contains the public key for encrypting the biometric data. Once you have selected the public key you require, click **Open**.



The software now attempts to load the public key to the selected devices. This may take some time. Once the process has been completed successfully, this will be indicated in a message.



The new certificate is now displayed for the respective devices in the Encryption column of the selection list.

Select	Position	Serial number	Pad type	Firmware	Connection type	Encryption	Signing
<input checked="" type="checkbox"/>	1	1200010385	Omega Serial	1.26	Serial	Ferenc Hilker (5e 2d cb a3 1d b6 9b 82 45 21 41 c0 35 94 fb b8)	Issued For: signotec Omega Device ID:1200010385 Issued By: signotec On
<input checked="" type="checkbox"/>	2	2000007442	Sigma Serial	1.16	Serial	Ferenc Hilker (5e 2d cb a3 1d b6 9b 82 45 21 41 c0 35 94 fb b8)	Issued For: signotec Sigma Device ID:2000007442 Issued By: signotec Sig
<input type="checkbox"/>	3	1100021439	Omega HID	1.31	HID		Issued For: signotec Omega Device ID:1100021439 Issued By: signotec On
<input type="checkbox"/>	4	1000055571	Sigma HID	1.16	HID		Issued For: signotec Sigma Device ID:1000055571 Issued By: signotec Sig

4.3.2 Signing

Generate key / certificate...

This option allows you to create a new signature key respectively certificate and load it to a device. For this purpose, you can select a key length of **1024 Bit** to **4096 Bit** and choose a certificate validity period ranging between one month and up to the maximum validity (year 2049).

Generating a certificate may take several minutes!

First select the checkboxes of the devices whose signing certificate you would like to change.

Select	Position	Serial number	Pad type	Firmware	Connection type	Encryption	Signing
<input checked="" type="checkbox"/>	1	1200010385	Omega Serial	1.26	Serial	Ferenc Hilker (5e 2d cb a3 1d b6 9b 82 45 21 41 c0 35 94 fb b8)	Issued For: Ferenc Hilker Issued By: Ferenc Hilke
<input checked="" type="checkbox"/>	2	2000007442	Sigma Serial	1.16	Serial	Ferenc Hilker (5e 2d cb a3 1d b6 9b 82 45 21 41 c0 35 94 fb b8)	Issued For: Ferenc Hilker Issued By: Ferenc Hilke
<input type="checkbox"/>	3	1100021439	Omega HID	1.31	HID		Issued For: signotec Omega Device ID:1100021439 Issued By: signotec Or
<input type="checkbox"/>	4	1000055571	Sigma HID	1.16	HID		Issued For: signotec Sigma Device ID:1000055571 Issued By: signotec Sig

Now click **Generate certificate...** and then click **Next** to go to the next step. By default, no RSA password is set for the device which means that you can leave this input field empty. If, however, you have set a password using one of the advanced functions, please enter it here.

Generate keys and certificates?

Device Password

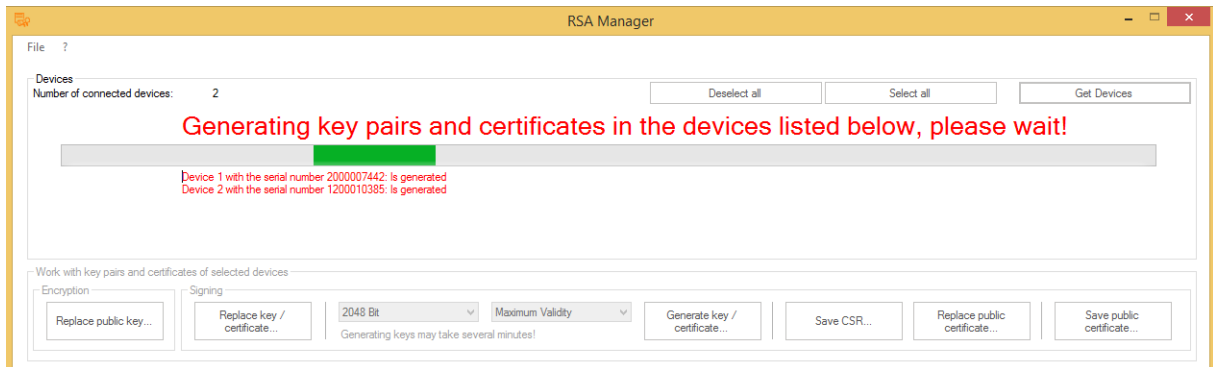
Enter the device password, if it is set:

Do you want to generate new key pairs and certificates in the following devices?

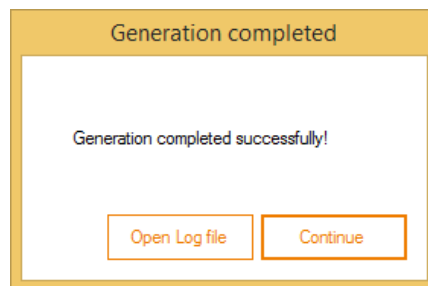
The keys and certificates currently stored in the devices are thereby irrevocably deleted! Please note that any expenses associated with the deletion are at your expense and signotec assumes no responsibility for the deletion.

Device 1 with the serial number 1600006109
Device 3 with the serial number 1100222329

The keys respectively certificates are now generated for the respective devices. A 'Generating key pairs and certificates' message is displayed during this process.



The following message appears as soon as all the keys respectively certificates have been generated successfully for the respective devices.



The new keys respectively certificate is now displayed for the respective devices in the Signing column of the selection list.

Select	Position	Serial number	Pad type	Firmware	Connection type	Encryption	Signing
<input checked="" type="checkbox"/>	1	1200010385	Omega Serial	1.26	Serial	Ferenc Hilker (5e 2d cb a3 1d b6 9b 82 45 21 41 c0 35 94 fb b8)	Issued For: signotec Omega Device ID:1200010385 Issued By: signotec On
<input checked="" type="checkbox"/>	2	2000007442	Sigma Serial	1.16	Serial	Ferenc Hilker (5e 2d cb a3 1d b6 9b 82 45 21 41 c0 35 94 fb b8)	Issued For: signotec Sigma Device ID:2000007442 Issued By: signotec Sig
<input type="checkbox"/>	3	1100021439	Omega HID	1.31	HID		Issued For: signotec Omega Device ID:1100021439 Issued By: signotec On
<input type="checkbox"/>	4	1000055571	Sigma HID	1.16	HID		Issued For: signotec Sigma Device ID:1000055571 Issued By: signotec Sig

Replace key / certificate...

You can use this button to replace the key respectively certificate for signing documents on the pad.

First select the checkboxes of the devices whose signing key respectively certificate you would like to change.

Select	Position	Serial number	Pad type	Firmware	Connection type	Encryption	Signing
<input checked="" type="checkbox"/>	1	1200010385	Omega Serial	1.26	Serial		Issued For: signotec Omega Device ID:1200010385 Issued By: signotec Omega
<input checked="" type="checkbox"/>	2	2000007442	Sigma Serial	1.16	Serial		Issued For: signotec Sigma Device ID:2000007442 Issued By: signotec Sigma
<input type="checkbox"/>	3	1100021439	Omega HID	1.31	HID	Ferenc Hilker (5e 2d cb a3 1d b6 9b 82 45 21 41 c0 35 94 fb b8)	Issued For: Ferenc Hilker Issued By: Ferenc Hilker \
<input type="checkbox"/>	4	1000055571	Sigma HID	1.16	HID	Ferenc Hilker (5e 2d cb a3 1d b6 9b 82 45 21 41 c0 35 94 fb b8)	Issued For: Ferenc Hilker Issued By: Ferenc Hilker \

Now click **Replace key / certificate...** and then click **Continue** to go to the next step. By default, no RSA password is set for the device which means that you can leave this input field empty. If, however, you have set a password using one of the advanced functions, please enter it here.

Generate keys and certificates?

Device Password

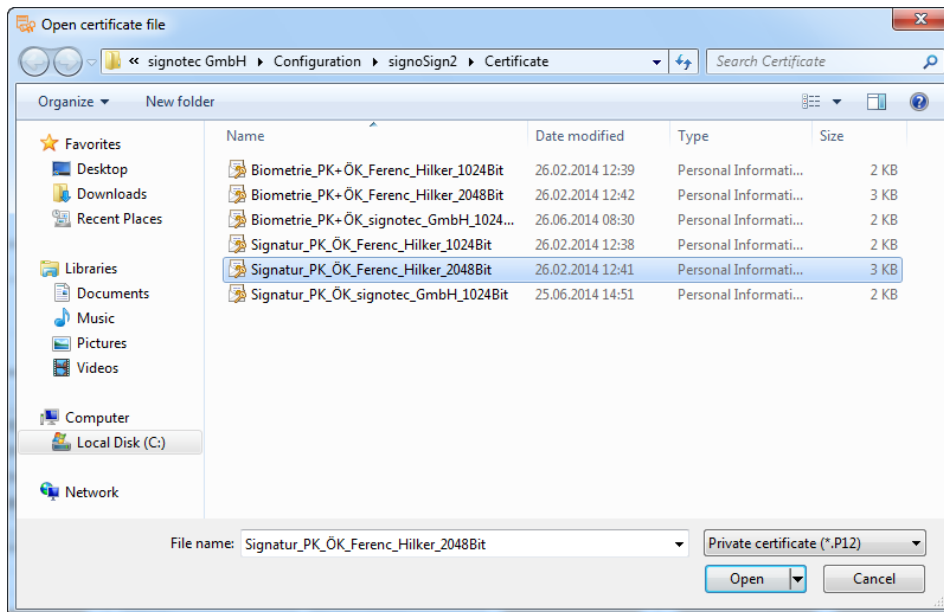
Enter the device password, if it is set:

Do you want to generate new key pairs and certificates in the following devices?

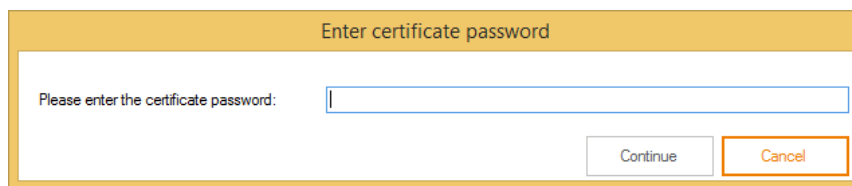
The keys and certificates currently stored in the devices are thereby irrevocably deleted! Please note that any expenses associated with the deletion are at your expense and signotec assumes no responsibility for the deletion.

Device 1 with the serial number 1600006109
Device 3 with the serial number 1100222329

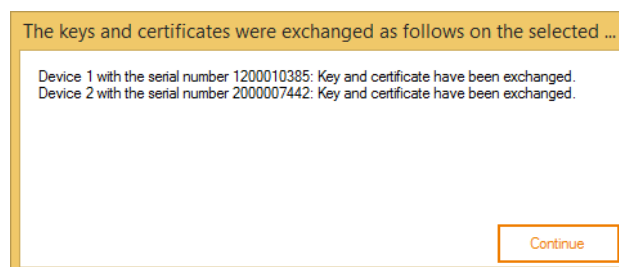
In the following Open PKCS#12 file dialog, please select the required certificate file (*.P12 or *.PFX). This file contains both the public and private key for signing a document. Once you have selected the key respectively certificate you require, click **Open**.



In the last step, you need to enter the password for the key respectively certificate. Once you have done this, please click **Continue**.



The software now attempts to load the key respectively certificate to the selected devices. This may take some time. Once the process has been completed successfully, this will be indicated in a message.



The new key respectively certificate is now displayed for the respective devices in the Signing column of the selection list.

Select	Position	Serial number	Pad type	Firmware	Connection type	Encryption	Signing
<input checked="" type="checkbox"/>	1	1200010385	Omega Serial	1.26	Serial	Ferenc Hilker (5e 2d cb a3 1d b6 9b 82 45 21 41 c0 35 94 fb b8)	Issued For: Ferenc Hilker Issued By: Ferenc Hilke
<input checked="" type="checkbox"/>	2	2000007442	Sigma Serial	1.16	Serial	Ferenc Hilker (5e 2d cb a3 1d b6 9b 82 45 21 41 c0 35 94 fb b8)	Issued For: Ferenc Hilker Issued By: Ferenc Hilke
<input type="checkbox"/>	3	1100021439	Omega HID	1.31	HID		Issued For: signotec Omega Device ID:1100021439 Issued By: signotec Om
<input type="checkbox"/>	4	1000055571	Sigma HID	1.16	HID		Issued For: signotec Sigma Device ID:1000055571 Issued By: signotec Sig

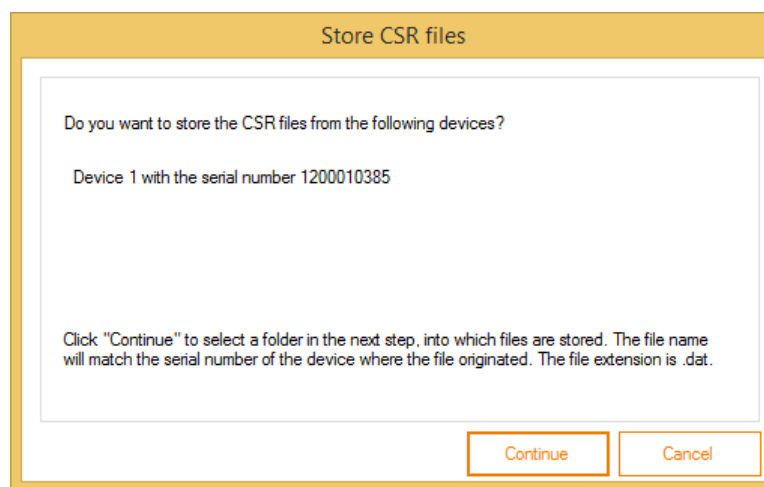
Save CSR...

Click this button to save a CSR (Certificate Signing Request) file from your self-signed signature certificate. With this **Serialnumber.pem** file, you can then request a root-certified certificate from a certification authority such as Verisign or TrustCenter. This will give you a certificate that has been issued by a trusted authority and will enable you to check signed documents without any problems.

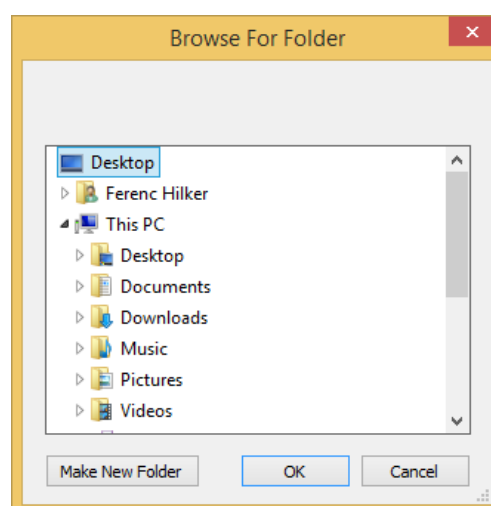
First select the checkboxes of the devices for which you would like to generate a request file for the certification authority.

Select	Position	Serial number	Pad type	Firmware	Connection type	Encryption	Signing
<input checked="" type="checkbox"/>	1	1200010385	Omega Serial	1.26	Serial	Ferenc Hilker (5e 2d cb a3 1d b6 9b 82 45 21 41 c0 35 94 fb b8)	Issued For: signotec Omega Device ID:1200010385 Issued By: signotec Orr
<input type="checkbox"/>	2	2000007442	Sigma Serial	1.16	Serial	Ferenc Hilker (5e 2d cb a3 1d b6 9b 82 45 21 41 c0 35 94 fb b8)	Issued For: signotec Sigma Device ID:2000007442 Issued By: signotec Sig
<input type="checkbox"/>	3	1100021439	Omega HID	1.31	HID		Issued For: signotec Omega Device ID:1100021439 Issued By: signotec Orr
<input type="checkbox"/>	4	1000055571	Sigma HID	1.16	HID		Issued For: signotec Sigma Device ID:1000055571 Issued By: signotec Sig

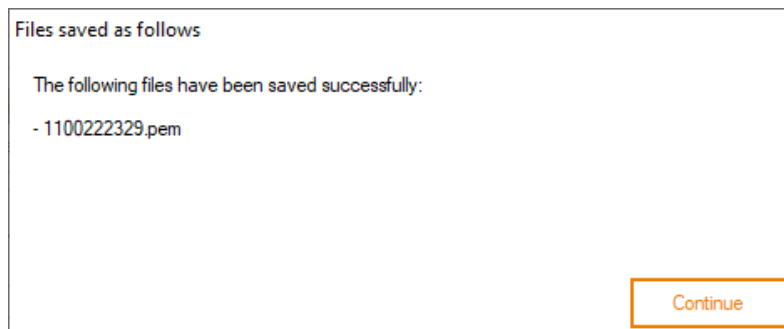
Now click **Save CSR...** and then click **Continue** to select the folder in which you want to store the file.



In the Browse For Folder dialog, please select the folder to which the file should be exported and then click **OK**.



Once the export process has been completed successfully, this will be indicated in a message. You will now find the exported file in the previously selected folder. The name of the file is **Serialnumber.pem**.



The file holds all the information that is required by the certification authority to issue you a root-certified certificate.

Replace public certificate...

Click this button to just replace the public key of the signature certificate. It makes sense to do this if you have generated a CSR file for a self-signed certificate on the pad and have sent the file to a certification authority. You end up with a new file in which only the public key is different but where the public key still matches the private key of the certificate on the pad.

First select the checkboxes of the devices for which you would like to replace the public key of the certificate.

Select	Position	Serial number	Pad type	Firmware	Connection type	Encryption	Signing
<input checked="" type="checkbox"/>	1	1200010385	Omega Serial	1.26	Serial	Ferenc Hilker (5e 2d cb a3 1d b6 9b 82 45 21 41 c0 35 94 fb b8)	Issued For: signotec Omega Device ID:1200010385 Issued By: signotec On
<input type="checkbox"/>	2	2000007442	Sigma Serial	1.16	Serial	Ferenc Hilker (5e 2d cb a3 1d b6 9b 82 45 21 41 c0 35 94 fb b8)	Issued For: signotec Sigma Device ID:2000007442 Issued By: signotec Sig
<input type="checkbox"/>	3	1100021439	Omega HID	1.31	HID		Issued For: signotec Omega Device ID:1100021439 Issued By: signotec On
<input type="checkbox"/>	4	1000055571	Sigma HID	1.16	HID		Issued For: signotec Sigma Device ID:1000055571 Issued By: signotec Sig

Now click **Replace public certificate...** and then click **Continue** to go to the next step. By default, no RSA password is set for the device which means that you can leave this input field empty. If, however, you have set a password using one of the advanced functions, please enter it here.

Replace certificates?

Device Password

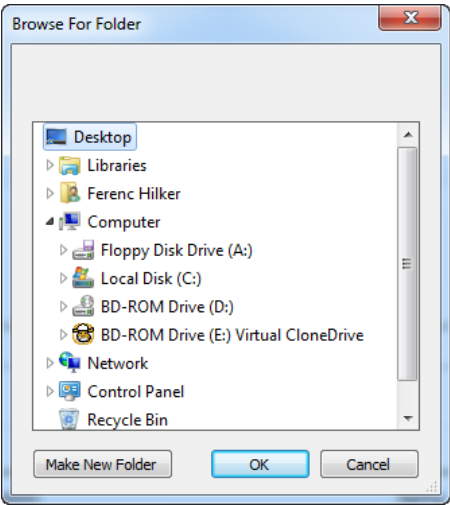
Enter the device password, if it is set:

Would you swap the public certificates for the selected devices?

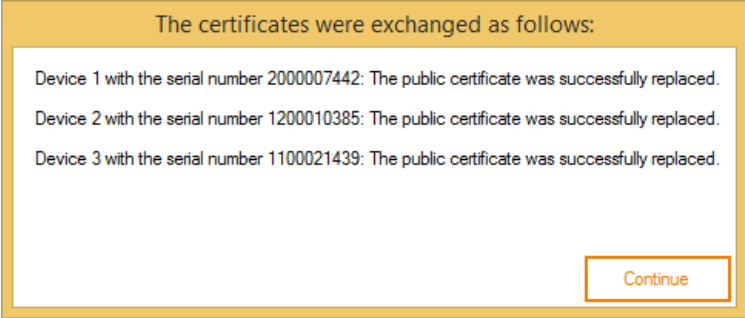
Device 1 with the serial number 2000007442
 Device 2 with the serial number 1200010385
 Device 3 with the serial number 1100021439

When you click OK you must select a folder in the next step. Please ensure that there are the appropriate certificate files in the selected folder. The file names must comply with the serial number of the device, in which the file is to be loaded. The file extension must be .cer.

In the Browse For Folder dialog, please select the folder that contains the file with the public key and then click **OK**.



The following message appears as soon as the key has been replaced successfully.



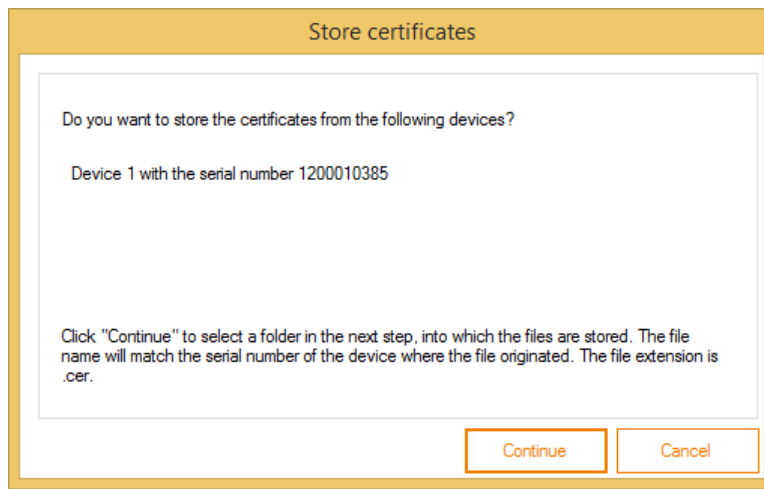
Save public certificate...

Click this button to export the public key of the signature certificate from the pad.

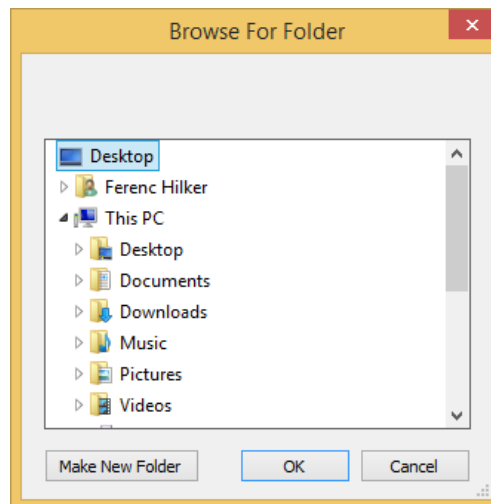
First select the checkboxes of the devices for which you would like to replace the public key of the certificate.

Select	Position	Serial number	Pad type	Firmware	Connection type	Encryption	Signing
<input checked="" type="checkbox"/>	1	1200010385	Omega Serial	1.26	Serial	Ferenc Hilker (5e 2d cb a3 1d b6 9b 82 45 21 41 c0 35 94 fb b8)	Issued For: signotec Omega Device ID:1200010385 Issued By: signotec On
<input type="checkbox"/>	2	2000007442	Sigma Serial	1.16	Serial	Ferenc Hilker (5e 2d cb a3 1d b6 9b 82 45 21 41 c0 35 94 fb b8)	Issued For: signotec Sigma Device ID:2000007442 Issued By: signotec Sig
<input type="checkbox"/>	3	1100021439	Omega HID	1.31	HID		Issued For: signotec Omega Device ID:1100021439 Issued By: signotec On
<input type="checkbox"/>	4	1000055571	Sigma HID	1.16	HID		Issued For: signotec Sigma Device ID:1000055571 Issued By: signotec Sig

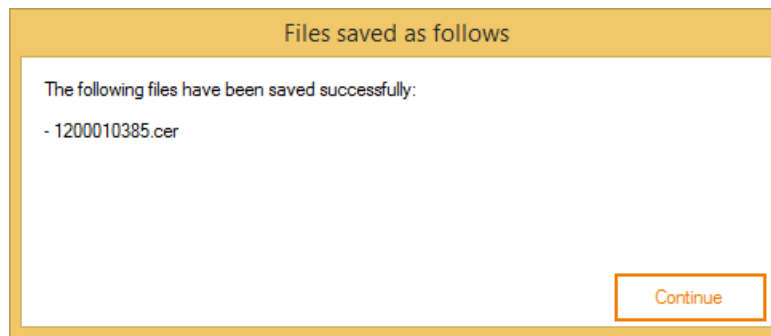
Now click **Save public certificate...** and then click **Continue** to select the folder in which you want to store the file.



In the Browse For Folder dialog, please select the folder to which the file should be exported and then click **OK**.



Once the export process has been completed successfully, this will be indicated in a message. You will now find the exported file in the previously selected folder. The name of the file is **Serialnumber.cer**.



This file contains the public key of the signature certificate.

5. signoReset

signoReset allows you to reset Sigma, Omega, Alpha, Gamma, Zeta and Delta signature devices in FTDI or HID mode or the WinUSB mode of the Gamma, Zeta, Alpha and Delta device to the factory default settings. The sample rate (250 Hz for Sigma, Omega, Gamma and Delta), pen width (2 px for Sigma, Zeta and Alpha and 3 px for Omega, Gamma and Delta) and pen colour (blue for Omega, Alpha, Gamma and Delta) are reset to the factory default settings, the image memory (Omega, Alpha, Gamma and Delta) is erased and the default graphics are loaded to the pad. If present, the certificate for encrypting the biometric data (Sigma firmware 1.16 or newer, Omega firmware 1.25 or newer and also Alpha, Gamma, Zeta and Delta) will also be deleted. The Alpha will also display the service menu to configure the connection type.

Alternatively, a different default graphic can be loaded into the signature device. For this the graphic must be stored next to the application with the following name (Sigma = sigma.bmp, Omega = omega.bmp, Alpha = alpha.bmp, Gamma = gamma.bmp, Zeta = zeta.bmp and Delta = delta.bmp).

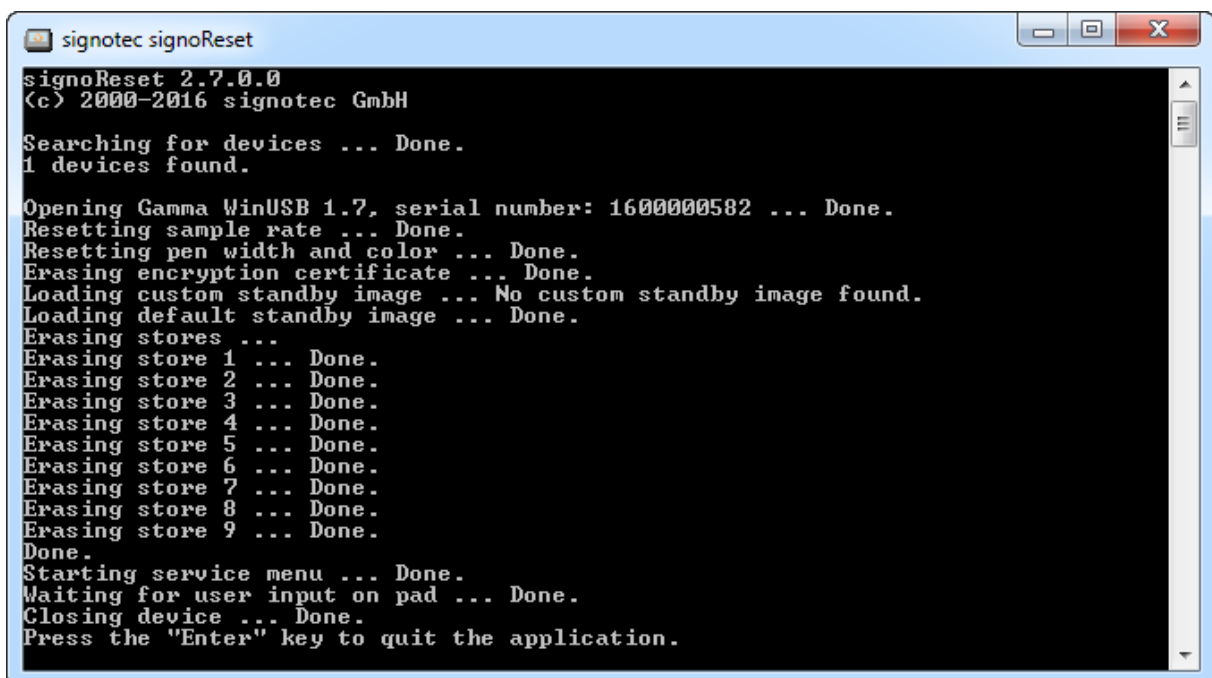
The signoReset application is described below.

5.1 User interface

As soon as signoReset has started, the following dialog appears.

At the beginning, an automatic search is carried out for all connected signature devices. Once the search is completed, signoReset starts to reset the devices that have been found.

In this example, a Gamma WinUSB with firmware 1.7 and serial number 1600000582 was found and reset to the factory default settings.



```

signotec signoReset
signoReset 2.7.0.0
(c) 2000-2016 signotec GmbH

Searching for devices ... Done.
1 devices found.

Opening Gamma WinUSB 1.7, serial number: 1600000582 ... Done.
Resetting sample rate ... Done.
Resetting pen width and color ... Done.
Erasing encryption certificate ... Done.
Loading custom standby image ... No custom standby image found.
Loading default standby image ... Done.
Erasing stores ...
Erasing store 1 ... Done.
Erasing store 2 ... Done.
Erasing store 3 ... Done.
Erasing store 4 ... Done.
Erasing store 5 ... Done.
Erasing store 6 ... Done.
Erasing store 7 ... Done.
Erasing store 8 ... Done.
Erasing store 9 ... Done.
Done.
Starting service menu ... Done.
Waiting for user input on pad ... Done.
Closing device ... Done.
Press the "Enter" key to quit the application.
  
```

After all the identified signature devices have been reset, you can close the application.

A large, solid red circle is centered on the page. Inside the circle, the text 'www.evolis.com' is written in a bold, black, sans-serif font.

www.evolis.com